

Clee Hill

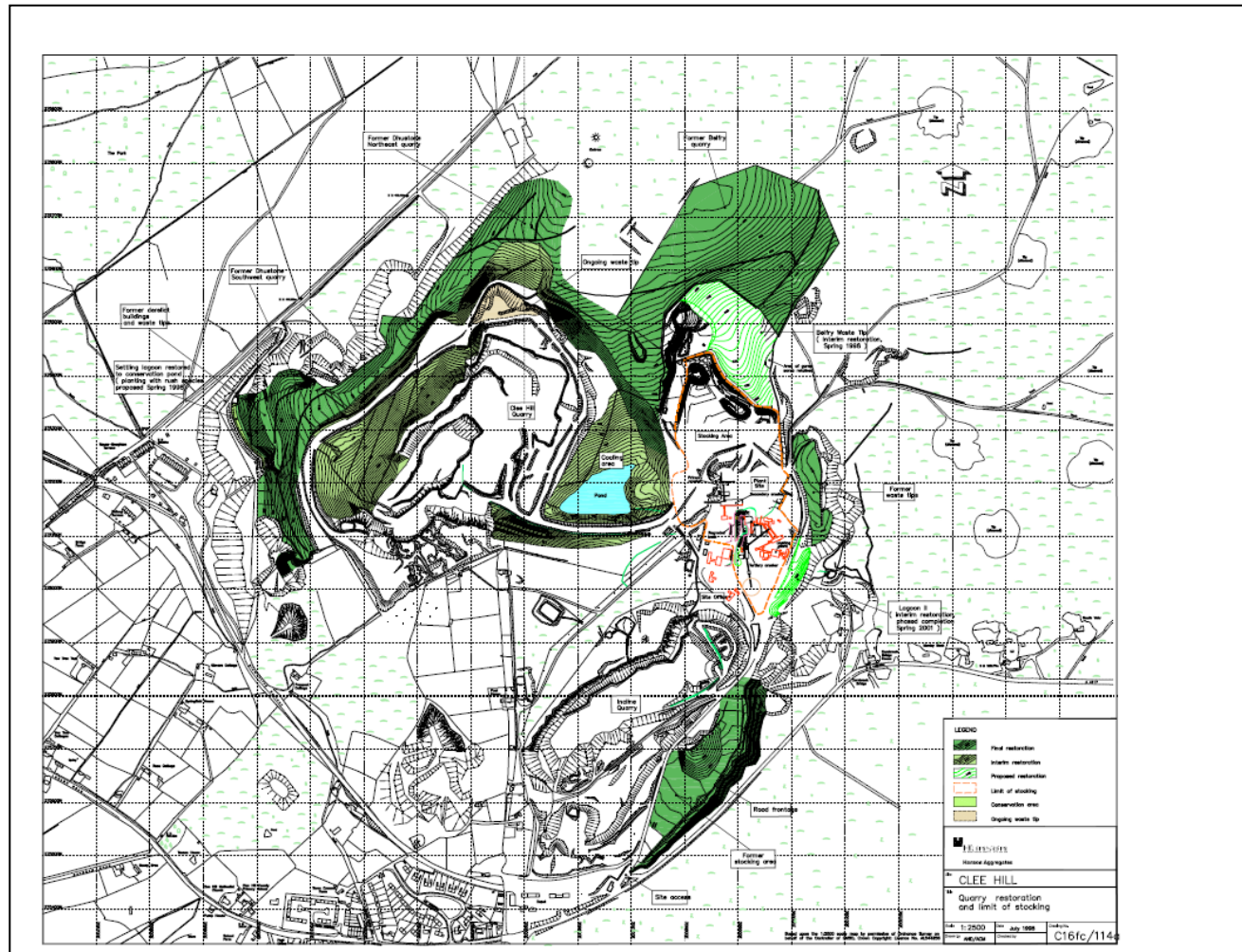
Site Biodiversity Action Plan



Site Information- Clee Hill

Site Name and Location (incl. Grid Ref.)	Clee Hill Quarry,nr. Ludlow, Shropshire (SO597758)
Hanson Company	Hanson UK- Central
BAP(s) that will be targeted	National BAP Shropshire BAP
Habitat(s) to be developed	Lowland Heathland Acid Grassland & Flushes[Fen]
BAP species to be encouraged	Amphibian & reptile Nightjar Snipe
Designated Natural Area	Shropshire Hills
Background and site description	Clee Hill Quarry comprises c. 100 hectares of land within the border hills of Shropshire. The quarry has been designated as aSSSI for it's geological interest and was started at least 800 years ago ,providing 'granite' [igneous dolerite] and coal through the centuries.
National Designations (SSSI, SAC, SPAs, RAMSARs and NPs) within 500m	The site lies within the Shropshire Hills AONB, where remote upland merges into pastoral lowland. Clee Hill Quarries SSSI, (within the site) designated because it is important in illustrating the mechanism of sill emplacement, and the relationship between alkaline magmatism, tectonics and sedimentation in the later stages of the Carboniferous Period in the Midlands; Titterstone Clee SSS, a hill of geological and biological importance;
Resource Requirements- comment on cost if appropriate	Pre-stripping ecological surveys and on-going monitoring of the site are a requirement of existing planning conditions. Protection of existing habitats is a legislative requirement. Creation of new lowland heath and acidic grassland is part of the approved restoration scheme
Contribution to biodiversity	Increasing the area of acid grassland is both a local and national BAP habitat target. Increasing acid grassland is a national BAP habitat target. The creation of these and juvenile forestry plantations will hopefully encourage nesting Nightjar, which is a local and national BAP species target.
Partners and Local initiatives	Shropshire wildlife Trust
Other documents supporting the site BAP	Full ecological report including as part of Environmental Statement. Pre-strip Phase 1 and Protected Species survey reports by SCC

Site Layout



Action Plan

Item No.	Objective	Biodiversity Feature	Targets	Tasks	Assessing Indicator	Responsible Person	Timescale (Completion)
1	To improve the quality of existing grasslands.	Acid grassland & lowland heathland.	20 ha of grassland/heath mosaic.	In compliance with approved site restoration scheme, seed areas with acid grassland mixture and encourage heather establishment by brash-laying, seeding and direct planting of stock transplanted from strip areas and on-site "nursery beds". Control weed species broom, bracken and trees.	Successful establishment of planted species.	Landscape Architect.	Phased restoration over life of site. (Approx 2030).
2	Encourage rare species.	Nightjar.	Suitable nesting areas available annually.	Establishment of heath/acid grassland as per target 1. Careful consideration of vegetation clearance prior to stripping to allow tree felling areas to be utilised by Nightjar.	Nightjar reported on site by Hanson staff / consultant ecologist / external wildlife group .	Landscape Architect, Site Manager.	Every year for life of site.
3	Protect species.	Waders eg Snipe and Reptiles and amphibians	Prevent disturbance to existing site populations.	Protect existing known nesting areas and limit disturbance on site by making staff aware of habitat areas.	Species monitoring reports bi-annually. Site Manager to inform staff and contractors working close to habitat areas.	Landscape Architect, Site Manager.	Every two years for life of site.