

Theale Recycling

Site Biodiversity Action Plan



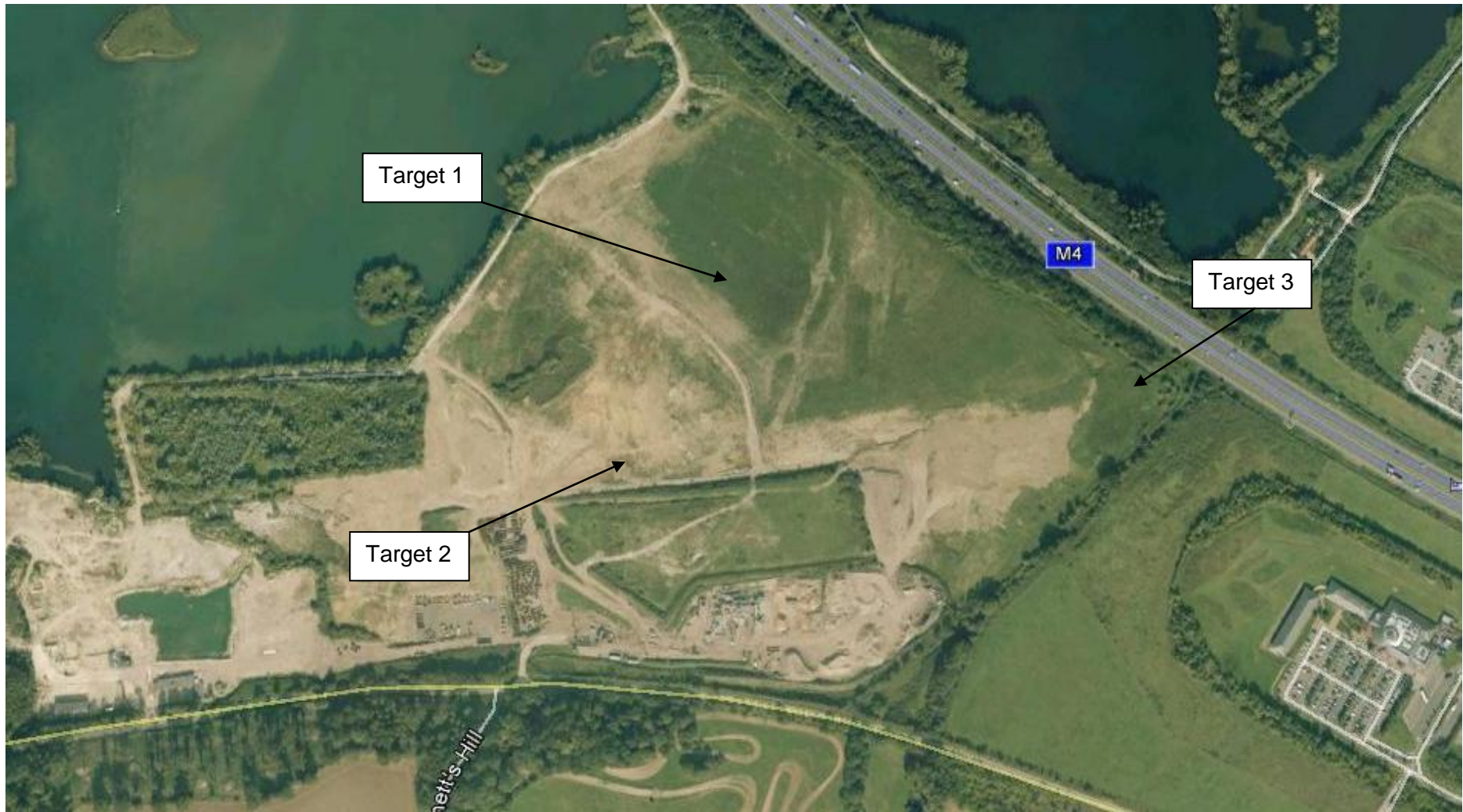
Prepared: December 2012

Updated: October 2013

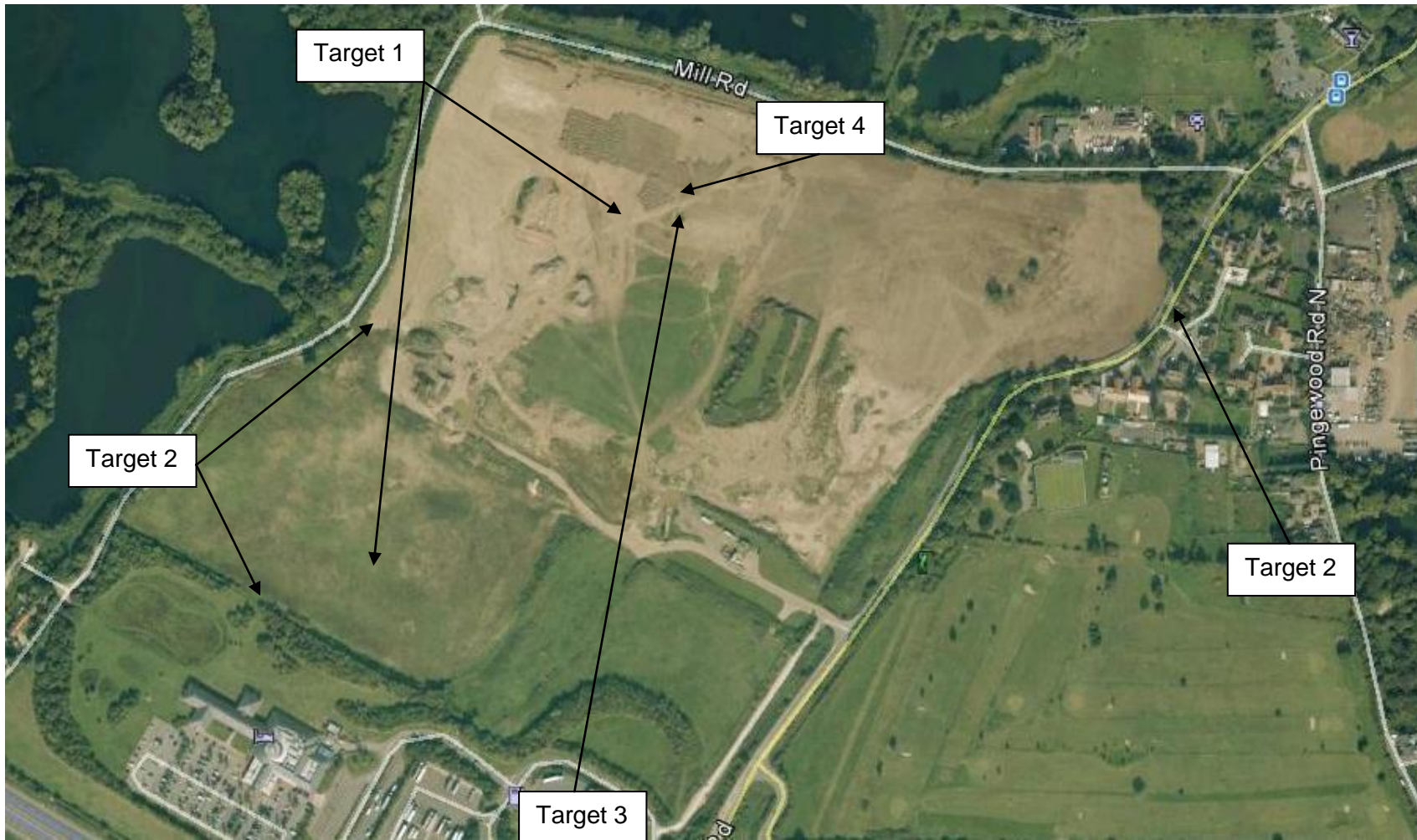
Site Information- Theale Recycling

Site Name and Location (incl. Grid Ref.)	Theale Quarry Recycling Facilities, West Berkshire Herons Nest grid ref. SU66227 69800 (site entrance) Field Farm grid ref. SU 67654 70228 (site entrance)
Hanson Company	Hanson Aggregates
BAP(s) that will be targeted	Berkshire Biodiversity Action Plan UK BAP
Habitat(s) to be developed	Lowland meadow Ponds Lowland mixed broadleaved woodland
BAP species to be encouraged	Little ringed plover Brown hare Farmland birds Pool frog, common toad Grass snake, slow worm
Designated Natural Area	London Basin
Background and site description	Former sand and gravel pits southwest of Reading. Both Herons Nest and Field Farm were dug by Hanson in the 1980's and subsequently Herons Nest was backfilled with inert waste and Field Farm was backfilled with both inert waste along with a cell of municipal waste. Herons Nest is currently leased to Alan Hadley Ltd. for final land forming and soil dressing. Habitat creation and aftercare management will be carried out by Hanson on completion of earthworks. Herons Nest and Field Farm lie within the Kennet Valley, bordered by the M4, River Kennet and canal and are close to the urban areas of Theale and Reading. The surrounding landscape has been widely quarried and restored to lakes and wetlands, the virgin landscape consists of pastoral and arable agriculture with hedgerows and copses of woodland.
National Designations (SSSI, SAC, SPAs, RAMSARs and NPs) within 500m	None
Resource Requirements- comment on cost if appropriate	Restoration budget is available to pay for habitat creation, aftercare and BAP works. It is hoped that volunteers will continue to be used where possible to carry out further bird surveys.
Contribution to biodiversity	The BAP will provide lowland meadow grassland, woodland and also pond features and will encourage those species associated with them.
Partners and Local initiatives	Berkshire Wildlife Trust (potential) Local bird watchers
Other documents supporting the site BAP	Herons Nest (T28m/123f) and Field Farm (T28r/199d) restoration schemes

Herons Nest Aerial Photograph
(2010)



Field Farm Aerial Photograph
(2010)



Action Plan

Item No.	Objective	Biodiversity Feature	Targets	Tasks	Assessing Indicator	Responsible Person	Timescale (Completion)
1	Improve and increase the extent of species-rich grassland	Species-rich grassland and associated plant and invertebrate species	<p>Restoration scheme for Field Farm (FF) and Herons Nest (HN) approved by LPA</p> <p>Carry out restoration in accordance with restoration schemes for both sites to achieve species rich grassland</p>	<p>1. Work with Land and Mineral Planning Managers to submit and approve scheme</p> <p>2. Work with Hadleys to ensure that final restoration landform at HN is completed in accordance with approved scheme</p> <p>3. Carry out appropriate soil cultivations to prepare seed beds</p> <p>4. Liaise with County ecologist or local seed supplier Heritage Seeds regarding a suitable seed mix</p> <p>5. Source grazing tenant and set up FBT for on-going grassland management</p>	<p>Plans approved</p> <p>Approved landform created through Best Practice soil handling techniques</p> <p>Suitable seed bed created for sowing</p> <p>Suitable mix obtained and seeded</p> <p>Grazing regime in place</p>	<p>Landscape Architect</p> <p>Landscape Architect/ Recycling Manager</p> <p>Landscape Architect</p> <p>Landscape Architect</p> <p>Landscape Architect/ Land and Mineral Planning Manager</p>	<p>Complete</p> <p>Guidance sent to Hadleys in Q2 of 2013 Earthworks on-going</p> <p>FF Q3 2015 HN as earthworks are completed</p> <p>FF seeding Q3 2015 HN seeding following earthworks</p> <p>FBT set up within 1 year of sward establishment reaching suitable condition</p>

2	Increase the extent of lowland mixed broadleaved woodland	Lowland mixed broadleaved woodland and associated flora and fauna	Increase extent of woodland by carrying out planting in accordance with approved restoration schemes	1. Carry out planting at FF and HN when restoration earthworks have been completed and grassland established for 1 year	Area of trees planted	Landscape Architect	FF planting to be carried out by Q2 2014 HN within one year of sward establishment
3	Improve and increase the extent of pond complexes	Ponds, ephemeral pools and associated invertebrates	Enhance existing pond complexes at FF and HN and increase in number where necessary	1. Assess the existing pond features 2. Improve as required on completion of initial survey	Ponds complexes enhanced	Landscape Architect	Ponds assessed by Q4 2014 Ponds enhanced by Q3 2015
4	Monitoring of target species	Little ringed plovers Farmland bird species Grassland species Invertebrate species	Develop partnerships with local bird watchers and other organisations e.g. BBOWT to continue and commence surveys	1. Engage with existing bird watchers to continue recording at FF and extend to HN when possible 2. Make contact with national organisations in order to carry out desired additional surveys	Reports in place, recommendations implemented	Landscape Architect	Relationship established and surveys and advice ongoing Q2 2016
5	Control/eradicate non-native invasive species	Native habitats	To control growth and spread invasive non-native species e.g. Japanese knotweed and eradicate if possible	1. Monitor for presence and apply implement control measures	Evidence of control	Landscape Architect	On-going throughout life